



# Lasso<sup>®</sup> MicroTech<sup>™</sup>

Herbicide by **Monsanto**  
Onkruiddoder deur



EMERGENCY TELEPHONE / NOODTELEFOON  
(011) 790 8200 (Office hrs/Kantoor-ure)  
09.1.314.694 4000  
(24 hr international / 24 uur internasionaal)

## Reg. No. L4728 Wet 36/1947

'n Mikrogekapsuleerde vooropkoms-onkruiddoder vir die beheer van meeste eenjarige grasse en sekere breëblaar-onkruid in mielies, suikermielies, grondbone, sojabone, sonneblomme, sorghum (graan en voer), aartappels, pynappels, suikerriet, lupiene en uitgeplante kopkool, broccoli, paprika en spruitkool.

### Aktiewe bestanddeel Alachlor

(Chloorasetanilied HRAG GP K3) 480 g/l

Geregistreer, Vervaardig & Versprei deur:  
**Monsanto Suid-Afrika (Edms) Bpk**  
Reg. No. 68/01485/07  
Posbus 69933  
BRYANSTON, 2021

## Reg. No. L4728 Act 36/1947

A pre-emergence micro encapsulated herbicide for control of most annual grasses and certain broadleaf weeds in maize, sweetcorn, groundnuts, soyabeans, sunflower, sorghum (grain and forage), potatoes, pineapples, sugarcane, lupins and transplanted cabbage, broccoli, paprika and brussels sprouts.

### Active ingredient Alachlor

(Chloroacetanilide HRAG GP K3) 480 g/l

Registered, Manufactured & Distributed by:  
**Monsanto South Africa (Pty) Ltd.**  
Reg. No. 68/01485/07  
P.O. Box 69933  
BRYANSTON, 2021

Date of manufacture  
Datum van vervaardiging

MONSANTO



UN NUMBER 3082

Batch No.  
Lot Nr.



## WAARSKUWINGS



## WARNINGS

### WAARSKUWINGS

- Kan gevaarlik wees vir visse.
- Giftig indien ingesluk word.
- Bewaar die middel weg van voedsel, voer, saad, kunsmis en ander landboumiddels.
- Hou buite bereik van kinders, diere en oningeligte persone.
- Ontvlambaar, hou weg van vlamme.
- Alhoewel hierdie middel omvattend onder 'n groot verskeidenheid toestande getoets is, waarborg die registrasiehouer nie dat dit onder alle toestande doeltreffend sal wees nie, aangesien die werking en effek daarvan beïnvloed kan word deur faktore soos abnormale grond-, klimaats en bergingstoestande, kwaliteit van verdunningswater, verenigbaarheid met ander stowwe wat nie op die etiket aangedui is nie en die voorkoms van weerstand van

### WARNINGS

- Can be toxic to fish.
- Poisonous if swallowed.
- Store away from food, feeds, seed, fertilizers and other agricultural chemicals.
- Keep out of reach of children and animals and uninformed persons
- Flammable, keep away from flames
- Although this remedy has been extensively tested under a large variety of conditions, the registration holder does not warrant that it will be efficacious under all conditions, because the action and effect thereof may be affected by factors such as abnormal soil, climatic and storage conditions, quality of dilution water, compatibility with other substances not indicated on the label and the occurrence of resistance of the weeds against the remedy concerned as well as by the

die onkruid teen die betrokke middel, sowel as die metode, tyd en akkuraatheid van toediening. Verder aanvaar die registrasiehouer nie verantwoordelikheid vir skade aan gewasse, plantegroei, die omgewing of vir nadelige effek op mens of dier of vir 'n gebrek aan prestasie van die betrokke middel as gevolg van die versuim van die gebruiker om etiketaanwysings na te kom of as gevolg van die ontstaan van toestande wat nie kragtens die registrasie voorsien kan word nie. Raadpleeg die verskaffer in die geval van enige onsekerheid.

### Lugtoediening

- Stel alle inwoners in die onmiddellike omgewing van die gebied wat bespuit sal word in kennis en reik die nodige waarskuwings uit.

method, time and accuracy of application. The registration holder furthermore does not accept responsibility for damage to crops, vegetation, the environment or harm to man or animal or for lack of performance of the remedy concerned due to failure of the user to follow the label instruction or to the occurrence of conditions which could not have been foreseen in terms of the registration. Consult the supplier in the event of any uncertainty.

### Aerial application

- Notify all inhabitants in the immediate vicinity of the area to be sprayed and issue the necessary warnings.

## VOORSORGMAATREËLS



## PRECAUTIONS

- Dra rubberhandskoene gedurende hantering.
- Moenie spuitmis of spuitnewel inasem nie.
- As die middel met die vel of oë in aanraking kom, was dadelik met baie water. Indien nodig, kry mediese behandeling vir die oë.

- Wear rubber gloves when handling.
- Do not breathe fumes or spray mist.
- In case of accidental contact with skin or eyes, wash immediately with plenty of water and, in the case of eyes, get medical attention if necessary.

- Moenie eet, drink of rook tydens gebruik of daarna nie, voordat eers gewas en skoon klere aangetrek is nie.
- Voorkom spuitstofwegdrywing en/of besoedeling van enige gewasse, weiding, riviere, damme en enige ander gebeide wat nie behandel word nie.
- Moenie leë houers vir enige ander doel gebruik nie.
- Moet nie voer, voedsel, drinkwater en eetgerei besoedel nie.

- Do not smoke, eat or drink while using, or before washing and change of clothing.
- Prevent spray drift and/or contamination onto susceptible or edible crops, grazing, rivers, dams or any other areas not under treatment.
- Do not re-use empty container for any other purpose.
- Prevent contamination of food, feeds, drinking water and eating utensils.

## GEBRUIKSAANWYSINGS



## DIRECTIONS FOR USE

### GEBRUIK ALLEENLIK SOOS AANGEDUI

#### Algemene inligting

- Verseker dat u toerusting akkuraat gekalibreer is.
- 'n Diep ploeg net voor plant is noodsaaklik vir:
  - a) Verbeterde beheer van **Cyperes esculentus** (geel-uintjie). (Sien "WISSEL-VALLIGE ONKRUID-BEHEER" onderaan hierdie etiket).
  - b) Opbreking van gekompakteerde lae wat kan lei tot versuip-toestande en gevolglik

### USE ONLY AS DIRECTED

#### General information

- Ensure accurately calibrated equipment.
- A deep ploughing just prior to planting, is essential for:
  - a) Improved control of **Cyperus esculentus** (yellow nutsedge). (See paragraph on "VARIABLE WEED CONTROL" at the end of this label).
  - b) Breaking of compaction layers which could lead to waterlogged soil and sub-



moontlike skade aan mielies na swaar reën.

- Berei 'n fyn en gelyk saadbed voor, vry van onkruid, plantreste en kluite vir optimale onkruidbeheer. LASSO Micro Tech sal onkruid op deklaagbewerkingslande beheer, maar plantreste mag onegalige LASSO Micro Tech verspreiding veroorsaak met 'n ooreenstemmende effek op onkruidbeheer.
- LASSO Micro Tech mag nie op ingeteelde ouerplante van mieliebasters of op eksperimentele of nuut vrygestelde kultivars of op suikermielies gebruik word nie, alvorens die vervaardigers of saadverspreiders geraadpleeg is nie.
- Moet nie op swak gedreineerde grond toedien nie. Versuiptoestande in die teenwoordigheid van onkruid-doder kan tot verminderde stand en/of vertraagde groei lei.
- Moet nie LASSO Micro Tech op waaisande toedien nie.

sequent possible damage to maize following heavy rain.

- For optimum results prepare a fine even seedbed free of weeds, trash and clods. LASSO Micro Tech will also give weed control in conservation tillage situations but trash may interfere with the distribution of LASSO Micro Tech and affect efficacy.
- Do not apply LASSO Micro Tech to inbred parent plants of maize hybrids, or onto experimental or newly released cultivars or sweetcorn, without first referring to the manufacturer or seed suppliers.
- Do not apply to poorly drained soils. Water logging in the presence of herbicides could cause stand reduction and/or stunted growth.
- Do not apply LASSO Micro Tech to sandy soils which are susceptible to wind erosion.

## GEBRUIKSAANWYSINGS



## DIRECTIONS FOR USE

- Alvorens LASSO Micro Tech met ander middels gebruik word moet die etiket van die betrokke middel gelees word en enige beperkings en aanbevelings nagekom word.
- Vloedbesproeiing kan tot verminderde onkruidbeheer lei.
- Before using LASSO Micro Tech in combination with other herbicides, read the labels and adhere to label recommendations and restrictions.
- Flood irrigation can reduce weed control efficacy.

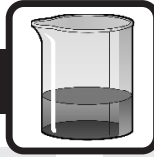
## MENGINSTRUKSIES



## MIXING INSTRUCTIONS

- Skud houer deeglik voor gebruik. Maak toe na gebruik.
- Maak die spuitenk half vol met skoon water. Voeg die regte hoeveelheid LASSO Micro Tech by terwyl dit gedurig geroer word. Maak die spuitenk nou verder vol met water.
- Indien LASSO Micro Tech saam met enige ander geregistreerde onkruidoder in dieselfde spuitenk gemeng word, volg die instruksies:
  - a) Maak die spuitenk
- Shake containers well before use. Close container securely after use.
- To a spray tank half filled with clean water, add the required amount of LASSO Micro Tech, while maintaining agitation. Complete filling operation.
- When mixing LASSO Micro Tech with other herbicides, use the following procedures:
  - a) Fill spray tank three quarters

## MENGINSTRUKSIES



## MIXING INSTRUCTIONS

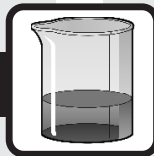
driekwartvol met skoon water en voeg die gekose hoeveelheid komplimentêre onkruidodder by terwyl daar gedurig geroer word.

- b) Maak die spuittenk nou amper vol met water en voeg die LASSO Micro Tech by. Vul nou die res van die tenk met water.
- c) Maak seker dat die mengsel gedurende meng en spuit deurgaans geroer word.
- d) Tenkmengsels moet onmiddelik uitgespuit word en nie toegelaat word om oornag te staan nie.
- e) Spuittoerusting moet deeglik uitgespoel word na toediening.

with clean water. Add required amount of complementary herbicide to the water, agitating continuously.

- b) Continue filling the spray tank with water and add the required amount of LASSO Micro Tech just before the tank is filled to its full level.
- c) Ensure thorough agitation to the mixture in the tank during mixing and spraying.
- d) Tank mixtures must be sprayed out immediately and not allowed to stand in the spray tank overnight.
- e) Thoroughly flush out spraying equipment at the end of the spraying operation.

## TOEDIENINGSINLIGTING

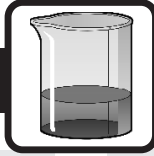


## APPLICATION INFORMATION

- Dien vooropkom behandelings van LASSO Micro Tech of tenkmengsel van LASSO Micro Tech mengsels verkieselik met plant, of onmiddelik na plant toe. Toediening moet nie later as twee dae na plant plaasvind nie.

- Apply pre-emergence treatments of LASSO Micro Tech or tank mixtures of LASSO Micro Tech preferably with planting of immediately after planting. But not later than two days after planting.

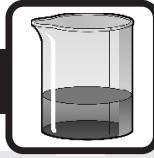
## TOEDIENINGSINLIGTING



## APPLICATION INFORMATION

- Gebruik 100 tot 300 l/ha van die spuitmengsel vir algehele grondtoediening en 30 tot 40 L/ha vir lugbespuiting.
  - 10 - 15 mm reën binne sewe tot tien dae na toediening is nodig vir goeie onkruidbeheer.
  - Onder droë toestande mag onkruidsaailinge opkom, maar hulle is gewoonlik verpot en kan beheer word met 'n vlak bewerking wat terselfdertyd die onkruiddoder met die boonste 10 - 20 mm grond vermeng.
  - Indien korsvorming voorkom, moet 'n vlak bewerking in dieselfe rigting as die plantrye gebruik word om ontkieming te bevorder.
  - Skoffelbewerking na toediening mag onkruidbeheer verminder indien onbehandelde grond na die oppervlakte gebring word.
  - Sorg dat voldoende kunsmis met plant naby die saad geplaas word om kragtige saailinggroei te bevorder.
- Use 100 to 300 l/ha total mix for overall ground application, and 30 to 40 L/ha for aerial application.
  - 10 - 15 mm rain or irrigation within seven to ten days after application is necessary for good weed control.
  - Under dry conditions, weed seedlings may emerge, These are usually stunted and can be controlled with a shallow cultivation, which also mixes the herbicide with the top 10-20mm soil.
  - If soil crusting becomes a problem, cultivate in the same direction the rows are planted, to assist germination.
  - Cultivation after application may reduce weed control if untreated soil is brought to the soil surface.
  - Ensure that sufficient fertilizer is placed near the seed at planting to promote vigorous seedling growth.

## TOEDIENINGSINLIGTING



## APPLICATION INFORMATION

- Sorg dat toedieningsapparaat korrek gekalibreer is en gereeld nagegaan word voor en gedurende die toediening.

### LUGBESPUITING

- Met lugtoediening van LASSO Micro Tech moet seker gemaak word dat die finale spuitneerslag op die grond dieselfde is as die aanbevole hoeveelheid en dat die verspreiding van die spuitstof oor die spuitwydte egalig is.

- Ensure equipment is accurately calibrated and regularly checked before and during the spraying operation.

### AERIAL APPLICATION

- Ensure that the final LASSO Micro Tech spray deposit on the ground equals the recommended application rate, and that the distribution of the material over the swath width is uniform.

TOEDIENINGSHOEVEELHEDE	APPLICATION RATES
MIELIES	MAIZE
ENKEL TOEDIENINGS	SINGLE APPLICATION
<ul style="list-style-type: none"><li>• Vooropkom toediening moet met planttyd geskied, of nie later as twee dae na plant.</li><li>• Toedienings hoeveelhede vir strookbehandelings moet dienoreenkomstig aangepas word.</li></ul>	<ul style="list-style-type: none"><li>• Pre-emerge application to be made at planting or not later than two days after planting.</li><li>• For on the row band treatments, adjust the rates accordingly.</li></ul>
<b>MIELIES TABEL 1</b>	<b>MAIZE TABLE 1</b>
Vir vooropkombeheer van eenjarige grasse en sekere breëblaar-onkruid, gebruik LASSO Micro Tech alleen.	For the pre-emergence control of annual grasses and certain broadleaf weeds; LASSO Micro Tech can be used alone.

MIELIES TABEL 1		MAIZE TABLE 1	
Vir vooropkombeheer van eenjarige grasse en sekere breëblaaronkruid, gebruik LASSO Micro Tech alleen.		For the pre-emergence control of annual grasses and certain broadleaf weeds; LASSO Micro Tech can be used alone.	
Opmerkings	% Clay Klei %	LASSO Micro Tech L/ha	Remarks
Hierdie behandeling word nie op gronde van 0 - 10% klei in die Wes Transvaal en Noord Oranje Vrystaat aanbeveel nie.	0 -10	3.2	This is not recommended on soils of 0 - 10% clay in the Western Transvaal and Northern Orange Free State.
	11 -15	3.2	
	16 - 20	3.6	
	21 +	4.0	

MIELIES TABEL 2					MIELIES TABEL 2				
Om 'n groter spektrum van breëblaaronkruid in MIELIES ALLEENLIK, te beheer word LASSO Micro Tech vooropkom tenk-mengsels met RATEL SC, of Atrasien SC, of Bladex Plus, of Extrasien SC, of Curatop SC, of Durazin 600 SC, of Suprazine 600 SC, of Terbuzin 600 SC aanbeveel.					To increase the spectrum of broadleaf weeds controlled by LASSO Micro Tech in MAIZE ONLY pre-emerge tank mixtures with RATEL SC, or Atrazine SC, or Bladex Plus, or Extrazine SC, or Curatop SC, or Durazin 600 SC, or Suprazine 600 SC, or Terbuzin 600 SC are recommended.				
% Clay Klei %	LASSO Micro Tech L/ha	plus ATAZINE SC L/ha	or/of Bladex Plus L/ha	or/of Extrazine SC L/ha	or/of RATEL SC L/ha	or/of Curatop SC L/ha	or/of Durazin 600 SC L/ha	or/of Suprazine 600 SC L/ha	or/of Terbuzin 600 SC L/ha
0 -10	3.2	1.75 - 2.25	*	2.25	2.75 - 3.25	2.5	2.0	2.1	2.1
11 - 15	3.2	2.50	2.0	2.6	3.25 - 4.0	3.25	2.7	2.7	2.7
16 - 20	3.6	2.75	2.0	2.9	3.25 - 4.0	3.25	2.7	2.7	2.7
21 -30	4.0	2.75 - 3.25	2.5	3.6	4.0	4.0	3.3	3.3	3.3
31 - 35	4.0	2.75 - 3.25	2.5	4.0	4.0 - 6.0	4.75	4.0	4.0	4.0
36 -40	4.0	4.0	2.5	4.0	4.0 - 6.0	4.75	4.0	4.0	4.0
41 - 50	4.0	4.0	2.5	*	*	*	4.0	4.0	4.0
51 - 55	4.0	4.0	2.5	*	*	*	4.0	4.0	4.0

- Wanneer 'n kort grond-nawerking verlang word t.o.v opvolg gewasse, gebruik alleenlik 1.5L Astrasien SC /ha op gronde bo 35% kei en 2.0L/ha op gronde bo 35% klei.
- LASSO Micro Tech kan in 'n tenkmengsel met Bladex Plus toegedien word waar Atrasien residuele oor-draging 'n probleem skep vir opvolg gewasse.
- Hou by die gebruiksbepoerings vir opvolg gewasse soos op die etikette aangedui van die triasien bevattende middels.
- Op gronde van 0 - 10% klei in die Wes Transvaal en Noord Oranje Vrystaat gebruik die aanbevelings in Tabel 3.
- Nie aanbeveel waar met 'n \* gemerk is nie.

- When a short soil persistence is required in view of follow-up crops use only 1.5L Atrazine SC /ha on soils up to 35% clay and 2.0L Atrazine SC/ha on soils over 35%.
- Lasso Micro Tech can be used in a tank mix with Bladex Plus where Atrazine carryover could be a problem with rotation crops.
- Adhere to the use restriction as indicated on the labels of the products containing triazine for follow-up crops.
- On soils of 0 - 10% clay in the Western Transvaal and Northern Orange Free State, use the recommendations in Table 3.
- Not recommended where marked with a\*.

### MIELIES TABEL 3

#### **Vir spesifieke eenjarige gras en breëblaaronkruidbeheer in mielies:**

Slegs vir gebruik op gronde van 0 - 20% klei. (Insluitend gronde van 0 - 10% klei in die Noordwes en Noord en Wes-Oranje-Vrystaat.) Dien LASSO Micro Tech toe na plant en voor gewas en onkruid opkom in 'n tenk mengsel met Atrasien SC of alleen gevolg deur Atrasien SC vroeg na opkom van die onkruid.

### MAIZE TABLE 3

#### **For specific annual grass and broadleaf weed control in maize:**

For use on soil of 0 - 20% clay only (including soils of 0 - 10% clay in the Northwest and Northern and Western Orange Free State) - apply the required rate of LASSO Micro Tech post planting of the crop and pre-emergence of the crop and weeds either in a tank mix with the required Atrazine SC rate of alone, followed by Atrazine SC applied early post emergence of the weeds.

Opmerkings	Weed Onkruid	LASSO Micro Tech L/ha	+ Atrazine SC L/ha	Remarks
<p>* Geeluintjies (<i>Cyperus esculentus</i>) word nie teen hierdie dosisse beheer nie.</p>	<p><i>Eleusine indica</i> (Jongosgras / Goose grass) <i>Chloris virgata</i> (Witpluim chloris / feathertop)</p>	<p>1.6</p>	<p>2.5-3.25 Depending on soil type. Afhangende van die grond tipe.</p>	<p>*Yellow nut-sedge (<i>Cyperus esculentus</i>) will not be controlled at these rates.</p>
<p>**In gebiede van hoë <i>Digitaria sanguinalis</i> (kruisvinger-gras) besmetting, word die gebruik van LASSO Micro Tech teen 3.2 - 4.0L/ha in 'n tenkmengsel met die aanbevole atrazine SC dosis aanbeveel (behalwe op gronde van 0 - 10% klei in die Noordwes en Noord en West-Oranje-Vrystaat. Vir die gebruik van gronde bo 20% klei - gebruik LASSO Micro Tech teen 4.0/ha soos hierin aanbeveel.</p>	<p><i>Digitaria sanguinalis</i> (Kruisvinger-gras** / crab finger grass**)  <i>Urochloa panicoides</i> (beesgras / herringbone grass)  <i>Panicum schinzii</i> (soetbuffels-gras / sweet-buffalo grass)</p>	<p>2.4</p>	<p>2.5-3.25 Depending on soil type. Afhangende van die grond tipe.</p>	<p>** In areas of known high <i>Digitaria sanguinalis</i> (crab finger grass infestations, it is recommended to use LASSO Micro Tech at 3.2 - 4.0L/ha in a tank mix with atrazine SC as recommended (excluding soils of 0 -10% clay in the Northwest and Northern and Western Orange Free State). For use on soils over 20% clay - use LASSO Micro Tech at 4.0 L/ha as recommended above.</p>

Opmerkings	% Clay/ Klei%	LASSO Micro Tech L/ha	Curatop SC L/ha	Remarks
* Geeluintjies ( <i>Cyperus esculentus</i> ) word nie teen hierdie dosisse beheer nie.	0 - 10	1.8	2.5	*Yellow nut- sedge ( <i>Cyperus esculentus</i> ) will not be con- trolled at these rates.
	11 - 20	2.4	3.25	
	21 - 30	3.0	4.0	
	31 - 50	3.5	4.75	

#### MIELIES TABEL 4

##### Vir verlengde breëblaar-en grasbeheer:

Dien 'n LASSO Micro Tech en RATEL SC tenk mengsel toe voordat die onkruid verby die volgende ontwikkelingsstadia is of nadat die onkruid deur 'n bewerking vernietig is:

- \*Breëblaar onkruid: 5 blaarstadium
- \*Eenjarige grasse: Voor stoelstadium
- \**Digitaria sanguinalis*: 3 blaarstadium (kruisvingergras)

#### MAIZE TABLE 4

##### For extended broadleaf and grass control:

Apply LASSO Micro Tech and RATEL SC in a tank mix before the weeds have developed beyond the following stages of after weeds have been destroyed by cultivation:

- \*Broadleaf weeds: 5 leaf stage
- \*Annual grasses: Before tillering
- \**Digitaria sanguinalis*: 3 leaf stage
- \*(grab finger grass)

#### Early post emergence /Vroeg na-opkoms

% Clay/ Klei%	RATEL SC L/ha	LASSO Micro Tech L/ha
0 - 10	3.0	1.6
11 - 20	3.5	1.6
21 - 30	4.0	1.6
31 - 50	4.0 - 6.0	1.6

or/of

Dien 'n Suprazine 600 SC, Durazin 600 SC, of Terbuzin 600 SC en LASSO Micro Tech as tenk mengsel toe voordat die onkruid verby die volgende ontwikkelingsstadia is of nadat die onkruid deur 'n bewerking vernietig is:

- \*Breëblaar onkruid: 4 blaarstadium
- \*Eenjarige grasse: Voor opkom

Apply Suprazine 600 SC, Durazin 600 SC, or Terbuzin 600 SC and LASSO Micro Tech in a tank mix before the weeds have developed beyond the following stages of after weeds have been destroyed by cultivation:

- \*Broadleaf weeds: 4 leaf stage
- \*Annual grasses: Not emerged



% Clay/ Klei%	Post-plant Pre-emerge Na-plant Vooropkom	Early post emergence /Vroeg na-opkoms				
		LASSO Micro Tech L/ha	or/of RATEL SC L/ha	or/of Atrazine SC L/ha	or/of Suprazine 600 SC L/ha	or/of Durazin 600 SC or/or Terbuzine 600 SC L/ha
0 - 10	1.6 - 3.2	3.0	2.5	2.1	2.0	Atrazine SC 2.0 + 2.4 -Damien (480g/L) 0.75 or/ Atrazine SC 2.0 + Spotaxe 0.5 +100 - 200 ml Armoblen 650/100L spray or/ Terbo 1.25 - 1.5 L
11 - 16	1.6 - 3.2	3.5	3.25	2.7	2.7	or/ Atrazine SC 2.0 + Spotaxe 0.5 +100 - 200 ml Armoblen 650/100L spray or/ Terbo 1.25 - 1.5 L
17 - 20	1.6 - 3.6	3.5	3.25	2.7	2.7	or/ Atrazine SC 2.0 + Spotaxe 0.5 +100 - 200 ml Armoblen 650/100L spray or/ Terbo 1.25 - 1.5 L
21 - 30	4.0	4.0	4.0	3.3	3.3	or/ Atrazine SC 2.0 + Spotaxe 0.5 +100 - 200 ml Armoblen 650/100L spray or/ Terbo 1.25 - 1.5 L
31 - 40	4.0	4.0 - 6.0	4.75 - 6.0	4.0	4.0	or/ Atrazine SC 2.0 + Spotaxe 0.5 +100 - 200 ml Armoblen 650/100L spray or/ Terbo 1.25 - 1.5 L
41 - 50	4.0	4.0 - 6.0	4.75 - 6.0	4.0	4.0	HARNESS EC 0.75 - 1.0L + Terbo 1.5L
Laer LASSO Micro Tech dosisse slegs vir beheer van <i>Eleusine indica</i> (Jongosgras) en <i>Chloris virgata</i> (Witpluim chloris).				Use the lower LASSO Micro Tech rates for control of <i>Eleusine indica</i> (goose grass) and <i>Chloris virgata</i> (Feathertop chloris) only.		

### MIELIES TABEL 6

**Vir verbeterde onkruidbeheer onder droë toestande en/of die onderdrukking van *Cyperus esculentus* (geeluitjie), kan LASSO Micro Tech as 'n vlak voorplant ingewerkte behandeling toegedien word. Dit moet opgevolg word deur 'n naplant voor- of na-opkom RATEL SC, Atrazien SC, Bladex Plus, Suprazine 600 SC, Durazin 600 SC, of Terbuzin 600 SC behandeling. Inwerking van LASSO Micro Tech moet op 'n fyn gelyke**

### MAIZE TABLE 6

**For improved weed control under dry conditions and/or improved *Cyperus esculentus* (yellow nutsedge) suppression LASSO Micro Tech can be applied as a pre plant shallow incorporated treatment and followed by a post plant RATEL SC, Atrazine SC, Bladex Plus, Suprazine 600 SC, Durazin 600 SC or Terbuzin 600 SC treatment, either pre emerge or early post emerge of the crop and weeds. Incorporation of LASSO Micro Tech should be on a**

<p>saadbed vry van kluite en plantreste, plaasvind. Gebruik 'n tandeg wat 5 10 cm diep te sny om 'n effektiwe mengdiepte van 2.5 5cm te kry. Tande moet so gestel word dat 'n eweredige inwerking verkry word en 'n rolmandjie, sleepeg of tandeg moet agteraan gekoppel word om 'n egalige vermenging te verseker. Moet nie LASSO Micro Tech op gronde van onder 10% klei of bo 35 % klei inwerk nie.</p>	<p>fine, even seedbed free of clods and trash, using a tyne implement set at 5 10cm to give an effective incorporation depth of 2.5 5cm. Tynes should be set to give an even incorporation with a rolling basket, drag harrow or spring loaded fine tooth harrow in tandem. The incorporation of LASSO Micro Tech is not recommended on soils of 0 10% clay nor those over 35% clay.</p>
--	--

	Post-plant Pre-emerge Na-plant Vooropkom	Post plant / Na plant					
		Early post emergence /Vroeg na-opkoms					
% Clay/ Klei%	LASSO Micro Tech L/ha	or/of Atrazine SC L/ha	or/of Bladex Plus L/ha	or/of Suprazine 600 SC L/ha	or/of Durazin 600 SC or/or Terbuzine 600 SC L/ha	or/of RATEL SC L/ha	or/of
11 - 16	3.2	3.25	2.0- 2.4	2.7	2.7	3.5	Altrazine SC 2.0 + 2.4 -Damien (480g/L) 0.75 or/of
17 - 20	3.6	3.25	2.4- 2.8	2.7	2.7	3.5	Atrazine SC 2.0 +
21 - 30	4.0	4.0	2.8- 3.2	3.3	3.3	4.0	Spotaxe 0.5 +100 - 200 ml Armoblen 650/100L spray or/of
31 - 35	4.0	4.75	2.8- 3.2	4.0	4.0	4.0	Terbo 1.25 - 1.5 L or/of HARNESS EC 0.75 - 1.0L + Terbo 1.5L

MIELIES TABEL 7	MAIZE TABLE 7
<p><b>Vir verlengde gras en breëblaarbeheer:</b></p> <p>Dien LASSO Micro Tech as 'n nplant-vooropkom behandeling</p>	<p><b>For extended grass and broadleaf weed control:</b></p> <p>Apply LASSO Micro Tech as a post plant pre-emerge treatment</p>

<p>toe, opgevolg met 'n vroege na-opkom behandeling:</p> <p>1) LASSO Micro Tech in 'n tenkmengsel met of Atrazien SC alleen, of Sptaxe, of Bladex Plus, of Extrazine SC of Terbo Of RATEL SC, of Suprazine 600 SC, of Durazin 600 SC, of Terbuzin 600 SC.</p> <p style="text-align: center;">Of</p> <p>2) GUARDIAN EC in 'n tenkmengsel met of Atrazien SC alleen, of Spotaxe, of Bladex Plus, of Extrazine SC, of Terbo, of Suprazine 600 SC of Durazin 600 SC, of Terbuzin 600 SC.</p> <p style="text-align: center;">Of</p> <p>3) HARNESS EC in 'n tenkmengsel met of Atrazien SC alleen, of Spotaxe, of Bladex Plus, of Extrazine SC, of Terbo, of Suprazine 600 SC of Durazin 600 SC, of Terbuzin 600 SC.</p>	<p>followed by an early post emerge treatment of:</p> <p>1) LASSO Micro Tech tank mixed with either Atrazine SC alone, or Spotaxe, or Bladex Plus, or Extrazine SC or Terbo, or RATEL SC, or Suprazine 600 SC, or Durazin 600 SC, or Terbuzin 600 SC.</p> <p style="text-align: center;">Or</p> <p>2) GUARDIAN EC tank mixed with either atrazine SC alone, or Spotaxe, or Bladex Plus, or Extrazine SC, or Terbo, or Suprazine 600 SC, or Durazin 600 SC, or Terbuzin 600 SC.</p> <p style="text-align: center;">Or</p> <p>3) HARNESS EC tank mixed with Atrazine SC alone, or Spotaxe, or Bladex Plus, or Extrazine S, or Terbo, or Suprazine 600 SC, or Durazin 600 SC, or Terbuzin 600 SC.</p>
--	--

% Clay/ Klei%	Post-plant Pre-emerge Na-plant Vooropkom	<b>Early post emergence /Vroege na-opkoms</b>	
	LASSO Micro Tech L/ha		<b>Plus</b>
0 - 10	3.2	0.75 GUARDIAN EC or/of 0.75 HARNESS EC or/of 2.0 LASSO EC or/of 1.6 LASSO Micro Tech	2.0 Atrazine SC with or without 0.5 Spotaxe or/of 0.5 Spotaxe or/of 1.25 - 1.5 Terbo or/of 2.1 Suprazine 600 SC or/of 2.0 Durazin 600SC or/of 2.0 Terbuzin 600 SC

11 - 20	3.2 - 3.6	0.75 - 1.0 GUARDIAN EC or/of 0.75 - 1.0 HARNESS EC or/of 2.0 LASSO EC or/of 1.6 LASSO Micro Tech	3.0 Atrazine SC or/of 2.0 Atrazine SC with or without 0.5 Spotaxe or/of 0.5 Spotaxe or/of 2.0 Bladex Plus or/of 2.25 Extrazine SC or/of 1.25 - 1.5 Terbo or/of 2.7 Suprazine 600 SC or/of 2.7 Durazin 600SC or/of 2.7 Terbuzin 600 SC
21 - 30	4.0	1.0 GUARDIAN EC or/of 1.0 HARNESS EC or/of 2.0 LASSO EC or/of 1.6 LASSO Micro Tech	3.0 - 35 Atrazine SC or/of 2.0 Atrazine SC with or without 0.5 Spotaxe or/of 0.5 Spotaxe or/of 2.5 Bladex Plus or/of 2.75 Extrazine SC or/of 1.25 - 1.5 Terbo or/of 3.3 Suprazine 600 SC or/of 3.3 Durazin 600SC or/of 3.3 Terbuzin 600 SC
		or/of 2.0 LASSO EC or/of 1.6 LASSO Micro Tech	4.0 RATEL SC
31 - 50	4.0	1.0 GUARDIAN EC or/of 1.0 HARNESS EC or/of 2.0 LASSO EC or/of 1.6 LASSO Micro Tech	3.0 - 35 Atrazine SC or/of 2.0 Atrazine SC with or without 0.5 Spotaxe or/of 0.5 Spotaxe or/of 2.5 Bladex Plus or/of 2.75 Extrazine SC or/of 1.25 - 1.5 Terbo or/of 4.0 Suprazine 600 SC or/of 4.0 Durazin 600SC or/of 4.0 Terbuzin 600 SC
		or/of 2.0 LASSO EC or/of 1.6 LASSO Micro Tech	4.0 - 60 RATEL SC

Vroeg na-opkom behandelings moet voor die 5-blaarstadium van breëblaar-onkruid en voor stoel van eenjarige grasse plaasvind. *Digitaria sanguinalis* (kruisvingergras) moet voor die 3-blaarstadium behandel word.

Waar 'n keuse van dosisse gegee word, gebruik die laer dosis op ligte gronde. Gebruik die hoër dosisse waar *Digitaria sanguinalis* (kruisvingergras) 'n probleem is.

Early post emerge treatment must be applied before the 5 leaf stage of broadleaf weeds and before tillering of annual grasses *Digitaria sanguinalis* (crab finger grass) must be treated before the 3 leaf stage.

Where a range of dosage rates is given, use the lower rate on the lighter soils. Use the higher rates where *Digitaria sanguinalis* (crab finger grass) is a problem.

MIELIES TABEL 8	MAIZE TABLE 8
<p>meeste Van die meeste onkruidsoorte in EPTC Plus of Eptam Super behandelde mielies: sojabone, sonneblomme, sorghum (graan- en veer), aardappels, rypappels, suikerriet, lupiene en uitgeplante koptkool, wiggies, die verjaarsprietkool, broodsoen, paprika en spruitkool.</p> <p>69933 een tenkmengsels BRYANSTON 2021 moet bestaande onkruid deur 'n vlak bewerking (minder as 3cm) vernietig word. In gevalle waar die gewas reeds opgekom het moet 'n gerigte bespuiting tussen die gewas rye plaasvind en nie oor die rye nie. Moet nie die LASSO Micro Tech na-opkom behandeling in minder as 200 l water per ha toedien nie.</p>	<p><b>For extended weed control in EPTC Plus or Eptam Super treated maize:</b></p> <p>Apply EPTC Plus or Eptam Super according to the manufacturers recommendations. Apply LASSO Micro Tech at 3.0 - 5.0 l/ha, or LASSO Micro Tech at 3.0 5.0 l/ha in a tank mix with Atriazine SC, or RATEL SC, or Suprazine 600 SC, or Durazin 600 SC, or Terbuzin 600 SC according to the recommendations in Tables 1 7 up to 4 weeks after planting the maize. Emerged weeds should be destroyed with a shallow cultivation (less than 3 cm deep) prior to treatment of LASSO Micro Tech or LASSO Micro Tech tank mixtures, Where the crop has emerged, spraying should be directed between the crop rows and not over the crop. Do not apply LASSO Micro Tech post emerge treatment in under 200 l water per ha.</p>

MIELIES TABEL 9	MAIZE TABLE 9
<p><b>Bewaringsbewerking</b></p> <p>Dien 'n tenkmengsel toe van LASSO Micro Tech met of STING of Brominal Super of Bentrol Super of Gramoxone nie later as 2 dae na plant. Hierdie behandeling is gemik op jong bestaande onkruid te vernietig en ook 'n na-opkom effek te hê. Met plant kan grond-versteuring plaasvind wat onkruid sal toelaat om langs of op die ry te ontkiem. Hierdie kan met 'n kontak na-opkomdoder gespuit word voordat die gewas opkom.</p> <p>STING of Brominal Super of Bentrol Super of Gramoxone moet volgens etiket</p>	<p><b>Conservation Tillage</b></p> <p>Apply a tank mix of STING or Brominal Super or Bentrol Super or Gramoxone and LASSO Micro Tech prior to or within 2 days of planting the crop. This treatment is directed at destroying existing young weeds and having a pre emerge herbicidal action. The planting process may result in weed emergence on or near the row and use should be made of a later post emergence treatment.</p> <p>STING or Brominal Super or Bentrol Super or Gramoxone should be applied</p>

<p>aanbevelings toegedien word. Dien LASSO Micro Tech toe volgens die dosisse soos in Tabel 1 aangedui. (Die tenkmengsels kan saam met Atrasiën SC of RATEL SC bespuit word, maar dit is essensieël om verenigbaarheid te bepaal voordat grootskaalse toedienings plaasvind. 'n Mengsel met Atrasiën SC moet nie gespuit word indien stolling of afsakking plaas vind nie).</p>	<p>according to the label recommendations and dosage rates of LASSO Micro Tech are as indicated in Table 1 above. (The above tank mixes can be mixed with Atrazine SC or RATEL SC, but it is essential to establish herbicide compatibility before large scale application. Do not spray these mixes of there are signs of flocculation or settling out in the spray tank).</p>
---	---

<b>VERDEELDE TOEDIENING</b>	<b>SPLIT APPLCATION</b>
-----------------------------	-------------------------

<b>MIELIES TABEL 10</b>	<b>MAIZE TABLE 10</b>
<p>Vir die beheer van gras en breëblaar onkruid in lae onkruid populasie druk gebiede:</p> <p>Dien LASSO Micro Tech as 'n na-plant vooropkomsbehandeling toe, opgevolg met 'n vroeg na-opkom behandeling:-</p> <p>LASSO Micro Tech in 'n tenkmengsel met of Atrasiën SC alleen of met Spotaxe of met Bladex Plus, of met Extrazine SC of met Terbo of met RATEL SC of Suprazine 600 SC of met Durazin 600 SC of met Terbuzin 600 SC.</p>	<p>For grass and broadleaf control on low weed population pressure areas:</p> <p>Apply LASSO Micro Tech as a post plant pre-emerge treatment followed by an early post emerge treatment of:-</p> <p>LASSO Micro Tech tank mixed with either Atrazine SC alone or with Spotaxe, or with Bladex Plus, or with Extrazine SC, or with Terbo, or with RATEL SC, or Suprazine 600 SC, or with Durazin 600 SC, or with Terbuzin 600 SC.</p>

% Clay/ Klei%	Post-plant Pre-emerge Na-plant Vooropkom	<b>Early post emergence /Vroeg na-opkoms</b>	
		LASSO Micro Tech L/ha	<b>Plus</b>
0 - 10	1.9	1.3 LASSO Micro Tech	<p>2.0 Atrazine SC with or without 0.5 Spotaxe or/of 0.5 Spotaxe or/of 1.25 - 1.5 Terbo or/of 2.1 Suprazine 600 SC or/of 2.0 Durazin 600SC or/of 2.0 Terbuzin 600 SC</p>

11 - 20	1.9 - 2.2	1.3 LASSO Micro Tech	3.0 Atrazine SC or/of 2.0 Atrazine SC with or without 0.5 Spotaxe or/of 0.5 Spotaxe or/of 2.0 Bladex Plus or/of 2.25 Extrazine SC or/of 1.25 - 1.5 Terbo or/of 2.7 Suprazine 600 SC or/of 2.7 Durazin 600SC or/of 2.7 Terbuzin 600 SC
21 - 30	2.4	1.6 LASSO Micro Tech	3.0 - 35 Atrazine SC or/of 2.0 Atrazine SC with or without 0.5 Spotaxe or/of 0.5 Spotaxe or/of 2.5 Bladex Plus or/of 2.75 Extrazine SC or/of 1.25 - 1.5 Terbo or/of 3.3 Suprazine 600 SC or/of 3.3 Durazin 600SC or/of 3.3 Terbuzin 600 SC or/of 4.0 RATEL SC
31 - 50	2.4	1.6 LASSO Micro Tech	or/of 3.0 - 35 Atrazine SC or/of 2.0 Atrazine SC with or without 0.5 Spotaxe or/of 0.5 Spotaxe or/of 2.5 Bladex Plus or/of 2.75 Extrazine SC or/of 1.25 - 1.5 Terbo or/of 4.0 Suprazine 600 SC or/of 4.0 Durazin 600SC or/of 4.0 Terbuzin 600 SC or/of 4.0 RATEL SC

Vroeg na-opkom behandeling moet voor die 5 blaarstadium van breëblaar-onkruid en voor stoel van eenjarige grasse plaasvind (*Digitaria sanguinalis* (kruisvingergras) moet voor die 3 blaarstadium behandel word).

Waar 'n keuse van dosisse gegee word, gebruik die laer dosis opligte gronde. Gebruik die hoër dosisse waar *Digitaria sanguinalis* (kruisvingergras) 'n probleem is.

Early post emerge treatments must be applied before the 5 leaf stage of broadleaf weeds and before tillering of annual grasses (*Digitaria sanguinalis* (crab finger grass) must be treated before the 3 leaf stage).

Where a range of dosage rates is given, use the lower rate on the lighter soils. Use the higher rates where *Digitaria sanguinalis* (crab finger grass) is a problem.

**MAIZE TABLE 11****MIELIES TABEL 11****Besproeide mielies**

LASSO Micro Tech kan volgens die aanbevelings in Tabela 1 - 10 op besproeide mielies toegedien word.

**LET WEL**

Triasien bevattende middels (RATEL SC, Atrisien SC, Extrazine SC, Bladex Plus, Curatop SC en Terbo) wat in LASSO Micro Tech tenkmengsels toegedien word, sal grondresidue tot gevolg hê. Moenie triasien-gevoelige opvolggewasse plant voordat die wagperiode, soos op die toepaslike etikette aangedui, verstryk het nie.

**Irrigated maize**

LASSO Micro Tech can be applied according to recommendations in Tables 1 - 10 in irrigated maize.

**NOTE**

Triazine-containing products (RATEL SC, Atrazine SC, Extrazine SC, Bladex Plus, Curatop SC and Terbo) tank-mixed with LASSO Micro Tech, will result in soil persistent residues. Do not plant susceptible crops before the waiting period stated on the appropriate labels have passed.

**SUIKERMIELIES**

Gebruik LASSO Micro Tech as 'n na-plant vooropkom behandeling. Suikermielies kultivars toon 'n groot verskeidenheid verdraagsaamheid teenoor LASSO Micro Tech en slegs weerstand-biedende kultivars moet behandel word. Raadpleeg u saadverskaffer en/of verteenwoordiger voordat suikermielies met LASSO Micro Tech behandel word.

**SWEETCORN**

LASSO Micro Tech can be applied as a post plant pre-emerge treatment. Sweetcorn cultivars exhibit a wide variation in tolerance to LASSO Micro Tech and only those cultivars known to be tolerant should be treated. Consult your seed supplier and/or representative before treating sweetcorn with LASSO Micro Tech.

% Clay/ Klei%	LASSO Micro Tech L/ha
0 - 1.0	Not recommended/Nie aanbeveel nie
11 - 15	3.2
16 - 20	3.6
21 - 35	4.0
35+	Not recommended/Nie aanbeveel nie

**PAPRIKA**

Dien LASSO Micro Tech teen 4.0 - 5.0 l/ha (soos per grond tipe) in 'n tenkmengsel met Ronstar teen 3.0 l/ha toe op 'n onkruidvrye grondoepervlakte voor uitplant of as 'n gerigte bespuiting (vermy gewas kontak) na uitplant maar voor die onkruid groter as die 3 blaarstadium is.

**PAPRIKA**

Apply LASSO Micro Tech at 4.0 - 5.0 l/ha according to soil type in a tank mix with Ronstar at 3.0 l/ha to a weedfree soil surface before transplanting or as a directed spray (avoid crop contact) post transplant before weeds are the 3 leaf stage.

**SUIKERRIET****SUIKERRIET TABEL 1**

Vooropkom van onkruid in plant- en ratoon suikerriet:

Dien 4.0 - 5.5 l/ha toe.

As Panicum maximum (gewone buffelsgras), alleenlik van saad, die hoof probleem is gebruik die hoër dosis.

Vir die beheer van 'n breëspektrum eenjarige gras en breëblaaronkruid, kan LASSO Micro Tech in 'n tenkmengsel met een van die volgende onkruiddoders toegedien word:

**SUGARCANE****SUGARCANE TABLE 1**

Pre-emergence in respect of weeds on plant and ratoon cane:

Apply 4.0 - 5.5 l/ha.

If Panicum maximum (common buffalo grass), from seed only, is expected to be a major problem, use the higher rate.

For the control of a broad spectrum of annual broadleaf and grass weeds, LASSO Micro Tech can be tank mixed with one of the following herbicides:

% Clay/ Klei%	L/ha	Product
0 - 35	2.0 - 5.0	Atrazine SC (500g/l)
	2.0 - 3.0	Gesapax 500 SC
	4.0	2.4 - D amien
	2.0 - 4.0	Diuron SC
	4.0	MCPA
35+	3.0 - 5.0	Atrazine SC (500g/l)
	2.0 - 3.0	Gesapax 500 SC
	4.0	2.4 - D amien
	2.0 - 4.0	Diuron SC
	4.0	MCPA

Gebruik die hoër dosisse by verwagte digte onkruidinfestaties en op swaar gronde (30 % + klei) en ook waar langer nawerking wenslik is en/of vir die verbeterde beheer van *Cyperus esculentus* (geeluintjie). Gebruik die laer dosisse op die ligte gronde.

The higher dosage rates should be used for anticipated heavy weed infestations and on heavier soils (30 % + clay) and also where a longer residual action is required and/or for improved control of *Cyperus esculentus* (yellow nutsedge). The lower dosage rates should be used on lighter soils.

## SUIKERRIET

## SUGARCANE

### SUIKERRIET TABEL 2

### SUGARCANE TABLE 2

#### Na-opkombehandlings:

- a) Dien 4.0 - 5.5 ℓ LASSO Micro Tech in 'n tenkmengsl met 6.0 ℓ Gesapax 500 SC/ha toe. Voeg 0.2% nie-ioniese bevorderings-middel soos Agrowett by die totale spuit-volume. Hierdie behandeling kan bo-oor die suikerriet tot die 5-blaarstadium toegedien word. Gerigte bespuitings moet tussen die suikerriet tye toegedien word waar die riet verby die 5-blaarstadium is.

Of

- b) Dien 4.0 - 5.5 ℓ LASSO Micro Tech /ha in 'n tenkmengsel met 3.0 5.0 ℓ Gesapax 500 SC/ha en 1.25 ℓ Oxytril/ha toe. Gerigte bespuiting moet na die 5-blaarstadium van die riet toegepas word.

Of

- c) Dien 4.0 - 5.5 ℓ LASSO Micro Tech/ha in 'n tenkmengsel met 3.0

#### Post-emerge treatments:

- a) Apply 4.0 - 5.5 ℓ LASSO Micro Tech /ha in a tank mix with 6.0 ℓ Gesapax 500 SC/ha. A non-ionic surfactant such as Agrowett should be added at 0.2% of the spray volume. This treatment may be applied over the sugarcane up to the 5 leaf stage. When the sugarcane is beyond the 5 leaf stage, the spray must be directed between the rows.

Or

- b) Apply 4.0 - 5.5 ℓ LASSO Micro Tech/ha in a tank mix with 3.0 - 5.0 ℓ Gesapax 500 SC and 1.25 ℓ Oxytril/ha. After the 5 leaf stage of the cane, treatment should be directed between the cane rows.

Or

- c) Apply 4.0 - 5.5 ℓ LASSO Micro Tech/ha in a tank mix with 3.0 - 5.0 ℓ

5.0ℓ Gesapax 500 SC/ha en 1.5 ℓ Gramoxone/ha toe. Op riet tot die 2 tot 3-blaarstadium.

Of

d) Dien 4.0 - 5.5 ℓ LASSO Micro Tech/ha in 'n tenkmengsel met 2.5 - 3.0 ℓ Diuron SC/ha en 1.25 ℓ Oxytril/ha toe. Gerigte bespuiting moet na die 5-blaarstadium van die riet toegepas word.

Of

e) Dien 4.0 - 5.5ℓ LASSO Micro Tech/ha in 'n tenkmengsel met 2.5 - 3.0ℓ Diuron SC/ha en 1.5 ℓ Gramoxone/ha toe. Op riet tot die 2-3 blaarstadium.

Of

f) Dien 5.5ℓ LASSO Micro Tech/ha in 'n tenkmengsel met atrasiën SC en 1.0 - 2.0ℓ Gramoxone/ha toe. Op riet tot die 2 tot 3 blaarstadium.

Gesapax 500 SC and 1.5 ℓ Gramoxone/ha. This treatment may be applied up to and including the 2-3 leaf stage of the cane.

Or

d) Apply 4.0 - 5.5 ℓ LASSO Micro Tech/ha in a tank mix with 2.5 - 3.0ℓ Diuron SC/ha and 1.25ℓ Oxytril/ha. After the 5 leaf stage of the cane, treatment must be directed between the cane rows.

Or

e) Apply 4.0 - 5.5 ℓ LASSO Micro Tech/ha in a tank mix with 2.5 - 3.0ℓ Diuron SC/ha and 1.5ℓ Gramoxone/ha. This treatment may be applied up to and including the 2-3 leaf stage of the cane.

Or

f) Apply 5.5ℓ LASSO Micro Tech/ha in a tank mix with Atrazine SC and 1.0 2.0ℓ Gramoxone/ha. This treatment may be applied up to and including the 2 to 3 leaf stage of the cane.

% Clay/ Klei%	ATRAZINE SC L/ha
0 - 35	2.0 - 5.0
35+	3.0 - 5.0

- Gebruik hoër dosisse by digte onkruid-infestasiës of om probleem onkruid te beheer.
- Gebruik die hoër na-opkom dosis aanbevelings op swaar gronde.
- Die na-opkombehandelings moet voor die stoelstadium van eenjarige grasse plaasvind.

- Higher rates should be used for heavy weed infestations or to control problem weeds.
- The higher dosage rates in the above post-emerge treatment recommendations should be used on heavier soils.
- The above post-emerge treatments should be made before tillering of annual grasses.

- Gebruik die aanbevelings onder (b), (c), (d) en (e) vir *Cyperus esculentus* (geeluintjie) beheer.
- LASSO Micro Tech sal nie blaarskade op suikerriet veroorsaak nie. Sekere van bogenoemde onkruidodders in tenkmengsels mag skade op suikerriet veroorsaak. Lees die betrokke etikette vir gebruiksbepoerings voor bespuiting.

- The higher dosage rates in treatments (b), (c), (d), and (e) should be used for *Cyperus esculentus* (yellow nutsedge) control.
- LASSO Micro Tech will not cause foliar injury to sugarcane. However, certain herbicides in the above tank mix combinations may cause injury. Consult the relevant labels regarding use restrictions prior to use.

## AARTAPPELS

## POTATOES

### Vooropkom van onkruid:

- Dien 3.2 - 4.0 ℓ/ha toe.
- Dien toe vooropkom van aartappels en onkruid. Gebruik die laer dosis op ligte gronde. Om LASSO Micro Tech se spektrum van beheer van breëblaaronkruid te vergroot, word Sencor 70 WP in 'n tenkmengsel met LASSO Micro Tech aanbeveel.
- Voeg na-opkom van onkruid: LASSO Micro Tech is 'n vooropkom onkruidoder. Nogtans, vir vroeë na-opkomstoediening, na besproeiing of reën, voeg 1.0 - 2.0 ℓ/ha Gramoxone by.
- GRAMOXONE / LASSO MICRO TECH MENGSELS MOET NIE TOEGEDIEN WORD AS MEER AS 10% VAN DIE AARTAPPELS OPGEKOM HET NIE!

### Pre-emergence in respect of weeds:

- Apply 3.2 - 4.0 ℓ/ha.
- Apply pre-emergence to potatoes and weeds. Use the lower rate on light soils. To increase the spectrum of broadleaf weeds controlled by LASSO Micro Tech, Sencor 70 WP in tank mix with LASSO Micro Tech is recommended.
- Early post-emergence in respect of weeds: LASSO Micro Tech is a pre-emergence herbicide. However, for an early post weed emergence application, after rain or irrigation, spray a tank mix with Gramoxone at 1.0 - 2.0 ℓ/ha.
- GRAMOXONE / LASSO MICRO TECH MIXTURES MUST NOT BE APPLIED AFTER 10% POTATO EMERGENCE!

GRONDBONE	GROUNDNUTS
<p><b>Vooropkom van gewas en onkruid</b></p> <ul style="list-style-type: none"> <li>• Dien 3.2 - 4.0 ℓ/ha toe.</li> <li>• Toediening moet met plant geskied of nie later as twee dae na plant nie. Gebruik die laer dosis op ligte gronde.</li> <li>• <b>Vroeg na-opkom van onkruid:</b> Vir die na-opkom beheer van LASSO Micro Tech weerstand-biedende breëblaaronkruid in GRONDBONE, word Basagran aanbeveel nadat LASSO Micro Tech met plant-toediening is.</li> </ul>	<p><b>Pre-emergence of weeds and crop</b></p> <ul style="list-style-type: none"> <li>• Apply 3.2 - 4.0 ℓ/ha.</li> <li>• Application to be made at planting, or not later than two days after planting. Use the lower rate on light soils.</li> <li>• <b>Early post-emergence of weeds:</b> For post-emergence control of LASSO Micro Tech resistant broadleaf weeds in GROUNDNUTS, Basagran can be used after LASSO Micro Tech has been applied at planting.</li> </ul>
SONNEBLUM	SUNFLOWER
<p>Dien toe vooropkom van onkruid en gewas teen 3.2 - 4.0 ℓ/ha afhangend van grondtipe. Gebruik 3.2 ℓ/ha op ligte gronde (0 - 16 % klei).</p>	<p>Apply pre-emergence of weeds and crop at 3.2 - 4.0 ℓ/ha depending on soil type. Use 3.2 ℓ/ha on lighter soils (0 - 16% clay).</p>
UITGEPLANTE KOPKOOLBROKKOLIE (LATE CORONA EN PREMIUM CROP) EN SPRUITKOOL (JADE CROSS)	TRANSPLANTED CABBAGE, BROCCOLI (LATE CORONA AND PREMIUM CROP) AND BRUSSELS SPROUTS (JADE CROSS)
<p><b>Vooropkom van onkruid na uitplanting van gewas:</b></p> <p>Dien 3.2 - 4.0 ℓ/ha toe.</p> <p>Dien direk na uitplant en</p>	<p><b>Pre-emergence of weeds, after crop transplant:</b></p> <p>Apply 3.2 - 4.0 ℓ/ha.</p> <p>Apply as soon as possible after</p>

daaropvolgende besproeiing toe en voorkom van onkruid. Gebruik 3.2 ℓ LASSO Micro Tech /ha op ligte gronde. (0 - 16% klei).

the first post-plant irrigation and pre-emergence of the weeds. Use 3.2 ℓ LASSO Micro Tech on lighter soils (0 - 16% clay).

**PYNAPPELS**

**PINEAPPLES**

Dien LASSO Micro Tech teen 3.2 - 4.0 ℓ/ha voorkom van onkruid. Gebruik 3.2 ℓ/ha op ligte gronde (0 - 16% klei).

Apply LASSO Micro Tech at 3.2 - 4.0 ℓ/ha pre-emergence of weeds. Use 3.2 ℓ/ha on lighter soils (0 - 16% clay).

**GRAAN- EN VOERSORGHUM**

**GRAIN AND FORAGE SORGHUM**

LASSO Micro Tech kan as 'n na plant voorkom behandeling in graan- en voersorghum toegedien word, mits die saad met Concep III saadbeveiliger volgens etiket aanbeveling behandel is.

LASSO Micro Tech can be used as a post plant pre-emerge treatment in grain and forage sorghum provided the seed has been treated with Concep III seed protectant according to label recommendation.

% Clay/ Klei%	ATRAZINE SC L/ha
0 - 10	Not recommended/Nie aanbeveelbaar
11 - 20	3.2
21 - 30	3.6
31 +	4.0

Vir verlengde gras- en breëblaar beheer dien LASSO Micro Tech toe as 'n na-plant voorkombehandeling gevolg deur 'n vroeë na-opkombehandeling van HARNESS EC (0.75 - 1.0 ℓ/ha) plus Terbo (1.25 - 1.5 ℓ/ha). Gebruik 'n laer toediening van HARNESS EC op ligte grond.

For extended control of broadleaf and grass weeds, apply LASSO Micro Tech as a post plant pre-emerge treatment followed by an early post emerge treatment of HARNESS EC (0.75 - 1.0 ℓ/ha) plus Terbo (1.25 - 1.5 ℓ/ha). Use the lower HARNESS EC rate on lighter soils.

<b>LUPIENE</b>	<b>LUPINS</b>
----------------	---------------

**Vooropkom van gewas en onkruid:**

Dien LASSO Micro Tech toe teen 3.2 - 4.0 l/ha.

Toediening moet met plant, of nie later as 2 dae na plant geskied. Gebruik die laer dosis op die ligter gronde (0 - 16 % klei).

**Pre emergence of weeds and crop**

Apply LASSO Micro Tech at a rate of 3.2 - 4.0 l/ha.

Application to be made at planting or not later than 2 days after planting. Use the lower rate on light soil (0 - 16 % clay).

<b>SOJABONE</b>	<b>SOYABONE</b>
-----------------	-----------------

**Vooropkom van gewas en onkruid:**

Dien vooropkom van gewas en onkruid binne 2 dae na plant toe.

**Pre emergence of weeds and crop:**

Apply pre-emergence of the crop and weeds within 2 days of planting.

% Clay/ Klei%	LASSO Micro Tech L/ha
0 - 10	4.0
11 - 20	4.0 - 4.5
21 - 30	4.5 - 5.0
31 +	5.0

**Opmerking:**

Gebruik die hoër dosisse by swaar onkruid infestaties en vir beheer van *Digitaria en Panicum spp.*

Vir verbeterde breëblaar-onkruidbeheer, dien 'n tenkmengsel van LASSO Micro Tech en Sencor 70 WP of Hammer na plant en voor gewas opkoms toe. Sencor 70 WP word nie aanbeveel op gronde van onder 10% klei of bo 35% klei nie.

**Remark:**

Use the higher rates for heavy weed infestation and for controle of *Digitaria en Panicum spp.*

For improved control of broadleaf weeds, a tank mix of LASSO Micro Tech and Sencor 70 WP or Hammer can be applied post plant and pre emerge of the crop. Sencor 70 WP is NOT recommended for use on soils of under 10% clay or over 35% clay.

% Clay/ Klei%	<b>LASSO Micro Tech L/ha + Sencor 70WP kg/ha</b>	
11 - 20	3.2 - 4.0	0.4
21 - 35	4.0	0.5

% Clay/ Klei%	<b>LASSO Micro Tech L/ha + Hammer l/ha</b>	
0 - 25	3.2 - 4.0	0.4
26 - 35	4.0	0.5

<b>WEEDS CONTROLLED BY LASSO EC</b>	<b>ONKRUIDE BEHEER DEUR LASSO EC</b>
-------------------------------------	--------------------------------------

**GRASSE**

Litjiesinjaalgras  
Witpluimchloris  
Kruisvngergas  
Hanepootmanna  
Jongosgras  
Gewone buffelsgras  
Soetbuffelsgras  
Rooiborselgras  
Kliitsborselgras  
Grootwortelsaadgras  
Beesgras

*Brachiaria eruciformis*  
*Chloris virgata*  
*Digitaria sanguinalis*  
*Echinochloa crus-galli*  
*Eleusine indica*  
*Panicum maximum*  
*Panicum schinzii*  
*Setaria pallide-fusca*  
*Setaria verticillata*  
*Tragus racemosus*  
*Urochloa panicoides*

**GRASSES**

Sweet signal grass  
Feathertop chloris  
Crab finger grass  
Barnyard grass  
Goose grass  
Common buffalo grass  
Sweet buffalo grass  
Red bristle grass  
Sticky bristle grass  
Large carrot seed grass  
Herringbone grass

**BREËBLARE**

Gewone misbredie  
Doringmisbredie  
Rooimisbredie  
Knopkruid  
Porselein  
Sydissel

*Amaranthus hybridus*  
*Amaranthus spinosus*  
*Amaranthus thunbergii*  
*Galinsoga parviflora*  
*Portulaca oleracea*  
*Sonchus oleraceus*

**BROADLEAVES**

Common pigweed  
Thorny pigweed  
Red pigweed  
Gallant soldier  
Purslane  
Sowthistle

**VARIABLE WEED CONTROL/WI**

Stink kamille  
Kosmos  
Withondebossie  
Groenhondebossie  
Rusperbossie  
Bengalsewandelendejood  
Geeluintjie  
Grootstinkblaar

*Anthemis cotula*  
*Bidens Formosa*  
*Chenopodium album*  
*Chenopodium carinatum*  
*Cleome monophylla*  
*Commelina benghalensis*  
*Cyperus esculentus*  
*Datura ferox*  
*(early germinating)*  
*Datura stramonium*  
*(early germinating)*  
*Stellaria media*  
*Tagetes minuta (early germinating)*

Stink mayweed  
Cosmos  
White goose foot  
Green goose foot  
Spindlepod  
Bengal wandering jew  
Yellow nutsedge  
Large thorn apple

Stinkblaar

Thorn apple

Sterremuur  
Kakiebos

Chickweed  
Khakiweed

<p>Aangesien LASSO Micro Tech eenjarige grasse beheer, kan ander eenjarige grasse wat nie gelys is nie, ook tot 'n mindere of meerdere mate beheer word. Die registrasiehouer aanvaar egter geen aanspreeklikheid t.o.v. ongelyste onkruid nie.</p>	<p>Since LASSO Micro Tech controls annual grasses, other annual grasses that are not listed may be controlled to a greater or lesser degree. The registration holder does not accept any liability in respect of the control of unlisted weeds.</p>	
<p><b>LET WEL:</b></p> <p>1. Die beheer van geeluintjie (<i>Cyperus esculentus</i>) is afhanklik van 'n diep skotteleg bewerking net voor plant en toediening 1 - 2 dae na plant, gevolg deur +/- 12 mm reën binne 7 - 10 dae.</p> <p>2. Die byvoeging van Atrisien SC teen die hoër aanbevole dosisse van LASSO Micro Tech sal die volgende onkruid beheer, asook die onkruid wat genoem word onder "wisselvallige onkruidbeheer":</p>	<p><b>NOTE:</b></p> <p>1. The control of yellow nutsedge (<i>Cyperus esculentus</i>) is dependent on a deep ploughing immediately before planting, and application 1 - 2 days after planting followed by +/- 12mm rain within 7 - 10 days.</p> <p>2. The addition of Atrazine SC at the highest recommended rate to LASSO Micro Tech will provide control of the following weeds in addition to the weeds listed under "Variable Weed Control":</p>	
<p>Agt sadige kruipsterklits Vyfsadige kruipsterklits Regopsterklits Gewone misbredie + Doringmisbredie+ Rooimisbredie + Spaanse kanpsekérel Kosmos Knapsekérel + Withondebossie + Groenondebossie Rusperbossie Mooinoentjie Bengaalse wandelendejood Mielie crotalaria Groot stinkkblaar + Stinkblaar + Knopkruid Gisekia Terblansbossie + Wildestokroos Basterappelliefie Wildeappelliefie + Porslein + Tropiese richardia Kleinkakiebos + Kakiebos + Wilde akkerboontjie</p>	<p><i>Acanthospermum australe</i> <i>Acanthospermum glabratum</i> <i>Acanthospermum hispidum</i> <i>Amaranthus hybridus</i> <i>Amaranthus spinosus</i> <i>Amaranthus thunbergii</i> <i>Bidens bipinnata</i> <i>Bidens Formosa</i> <i>Bidens pilosa</i> <i>Chenopodium album</i> <i>Chenopodium carinatum</i> <i>Cleome monophylla</i> <i>Cleome rubella</i> <i>Commelina benghalensis</i> <i>Crotalaria sphaerocarpa</i> <i>Datura ferox</i> <i>Datura stramonium</i> <i>Galinsoga pharnaceoides</i> <i>Gisekia pharnaceoides</i> <i>Hibiscus trionum</i> <i>Hibiscus cannabinus</i> <i>Nicandra physaloides</i> <i>Physalis angulata</i> <i>Portulaca oleracea</i> <i>Richardia brasiliensis</i> <i>Schkuhria pinnata</i> <i>Tagetes minuta</i> <i>Vigna vexillata</i></p>	<p>Eight-seeded prostrate starbur Five-seeded prostrate starbur Upright starbur Common pigweed Thorny pigweed Red pigweed Spanish blackjack Cosmos Blackjack White goosefoot Green goosefoot Spindlepod Pretty lady Bengal wandering jew Mealie crotalaria Large thorn apple Thorn apple Gallant soldier Gisekia Bladder weed Kenaf Apple of Peru Wild gooseberry Purslane Tropical richardia Dwarf marigold Khakiweed Wild cow pea</p>

Onkruid gemerk met 'n + word deur 'n tenkngensel van LASSO Micro Tech en die laer Atrasien SC dosis beheer.

Droeë of baie nat toestande kan lei na 'n vermindering in effektiewe onkruidbeheer deur 'n tenkngensel van LASSO Micro Tech en Atrasien SC.

Laat ontkiemende stinkblaar (*Datura spp*) en Kakiebos (*Tagetes minuta*) sal moontlik nie deur LASSO Micro Tech / atrasiën SC mengsels beheer word nie.

#### Wisselbou gewasse:

Wanneer Atrasien SC of ander triasiënbevattende middels in tenkngensels met LASSO Micro Tech gebruik word, moet die betrokke etiket beperkings in verband met opvolggewasse nagekom word.

Weeds marked with + will be controlled by a tank mix of LASSO Micro Tech with the lower rate of Atrazine SC as indicated above.

Dry of excessively wet conditions may reduce the weed control performance of a tank mix of LASSO Micro Tech and Atrazine SC.

Late germinating thorn apple (*Datura spp*) and khakiweed (*Tagetes minuta*) might **not be controlled** by LASSO Micro Tech/atrazine SC mixtures.

#### Rotation crops:

When using atrazine or other triazine compounds in tank mixes with LASSO Micro Tech, follow the appropriate label regarding restrictions on rotation crop plantings.

The following trademarks and registrations under Act 36 of 1947 are acknowledged:		Die volgende handels-merke en registrasies onder Wet 36 van 1947 word erken:	
Produk / Product	Reg. No.	Registrasiehouer	Registration holder
2,4-D Amine 480 SL	L 3619/L6459	Dow AgroSciences, BPK	Dow AgroSciences, LTD
Armoblen 850	L4159	Dow AgroSciences, BPK	Dow AgroSciences, LTD
Atrasien 500 SC	L0498	Dow AgroSciences, BPK	Dow AgroSciences, LTD
Atrazine 800 WP	L0839	Dow AgroSciences, BPK	Dow AgroSciences, LTD
Basagran	L2916	B.A.S.F. S.A. (Edms) Bpk	B.A.S.F. S.A. (Pty) Ltd
Bentrol Super	L5167	Aventis CropScience, SA (Edms) Bpk	Aventis CropScience, SA (Pty) Ltd
Bladex Plus SC	L5272	B.A.S.F. S.A. (Edms) Bpk	B.A.S.F. S.A. (Pty) Ltd
Brominal Super	L5168	Aventis CropScience, SA (Edms) Bpk	Aventis CropScience, SA (Pty) Ltd
Concep 960 EC	L5051	Syngenta AG, Basel, Switzerland	Syngenta AG, Basel, Switzerland
Curatop 500 SC	L3148	Dow AgroSciences, BPK	Dow AgroSciences, LTD
Diuron 800 SC	L3200	Dow AgroSciences, BPK	Dow AgroSciences, LTD
Durazin 600 SC	L4684	Novartis	Novartis
Eptam Super	L3897	Pro-Hyd	Pro-Hyd
EPTC Plus	L5248	Kynoch Agro Chemicals (Edms) Bpk	Kynoch Agro Chemicals (Pty) Ltd
EPTC Plus	L4504	Universal Crop Protection (Edms) Bpk	Universal Crop Protection (Pty) Ltd
Extrazine SC	L5274	B.A.S.F. S.A. (Edms) Bpk	B.A.S.F. S.A. (Pty) Ltd
Gesapax 500 SC	L2784	Syngenta AG, Basel, Switzerland	Syngenta AG, Basel, Switzerland
Gramoxone	L1174	Syngenta AG, Basel, Switzerland	Syngenta AG, Basel, Switzerland
GUARDIAN S EC	L4862	Monsanto SA (Edms) Bpk	Monsanto SA (Pty) Ltd
Hammer	L5201	B.A.S.F. S.A. (Edms) Bpk	B.A.S.F. S.A. (Pty) Ltd
HARNESS EC	L3029	Monsanto SA (Edms) Bpk	Monsanto SA (Pty) Ltd
MCPA	L3616	Dow AgroSciences, BPK	Dow AgroSciences, LTD
MCPA	L1404	Aventis CropScience, SA (Edms) Bpk	Aventis CropScience, SA (Pty) Ltd
Oxytril	L3982	Aventis CropScience, SA (Edms) Bpk	Aventis CropScience, SA (Pty) Ltd
RATEL SC	L5063	Monsanto SA (Edms) Bpk	Monsanto SA (Pty) Ltd
Ronstar	L0417	Aventis CropScience, SA (Edms) Bpk	Aventis CropScience, SA (Pty) Ltd
Sencor 480 SC	L3034	Bayer	Bayer
Spotaxe 320 SL	L4303	Syngenta AG, Basel, Switzerland	Syngenta AG, Basel, Switzerland
Sting	L3066	Monsanto SA (Edms) Bpk	Monsanto SA (Edms) Bpk
Suprazine 600 SC	L4848	Dow AgroSciences, BPK	Dow AgroSciences, LTD
Terbo	L3931	Aventis CropScience, SA (Edms) Bpk	Aventis CropScience, SA (Pty) Ltd
Terbuzin 600 SC	L4683	Syngenta AG, Basel, Switzerland	Syngenta AG, Basel, Switzerland

Monsanto is 'n lid van AVCASA.  
Oktober 2002

Monsanto is a member of AVCASA.  
October 2002